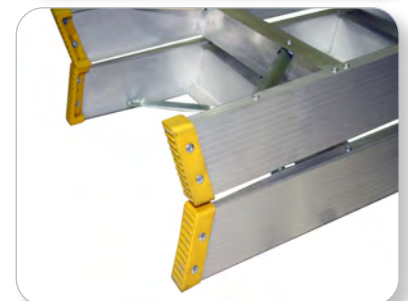


DOUBLE SIDED PLASTIC TOP LADDER



- Durable plastic tool holder accommodates bucket handles and other tools
- Wide, slip-resistant aluminium steps allows one to stand comfortably for long durations of time
- Ascent possible from front and back thereby permitting two persons to use the ladder at the same time
- 74° angle positioning and conical construction ensures safety when standing upright
- Wide aluminium channel for grip and extra strength



DOUBLE SIDED PLASTIC TOP LADDER LOAD CAPACITY: 150 KG				
ITEM CODE	STEPS + TOP	FREESTANDING HEIGHT		APPROXIMATE WEIGHT
		METRES	FEET	KILOGRAMS
DSPT 4	4 (3+1)	1.1	3'7"	5.0
DSPT 5	5 (4+1)	1.4	4'7"	6.1
DSPT 6	6 (5+1)	1.7	5'7"	7.2
DSPT 7	7 (6+1)	2.0	6'7"	8.6
DSPT 8	8 (7+1)	2.3	7'7"	9.75
DSPT 10	10 (9+1)	2.9	9'6"	12.65

TECHNICAL FEATURES ARE INDICATIVE AND CAN BE MODIFIED WITHOUT PRIOR NOTICE
THE NUMBER OF STEPS MENTIONED INCLUDES THE TOP STEP, ALTHOUGH ONE MUST NOT STAND/WORK ON THIS STEP

Ideal for general, heavy-duty applications:

Maintenance/ Repair Jobs

Heavy-Duty DIY

Painting Jobs

Installation Works

TAKING YOU ONE STEP HIGHER